



Established 1925

KANSAS GEOLOGICAL SOCIETY

# BULLETIN

Volume 89 Number 5

September—October 2014

## IN THIS ISSUE

*Memorial:*  
*Ray Dombaugh*  
*Page 11*

## COMING UP IN OCTOBER

*KGS 21ST ANNUAL  
CLAY SHOOT*

*Mid-Continent AAPG  
Field Conference  
“Exploring the Arbuckles”  
See Page 10 For Details*



# Robert F. Walters Digital Library

## The most complete source for Kansas data

Day or Night  
 You can get to the data as you need it

[www.kgslibrary.com](http://www.kgslibrary.com)

To Join: call 316-265-8676

The screenshot displays the Robert F. Walters Digital Geological Library website. At the top, there is a search bar with fields for Section, Township, Range, and well parameters like API Number, Lease Name, Depth, and Spot. Below the search bar is a table listing well records with columns for Well No., Spot, Location, H.S., E.W., Spud, Completion, Depth, E.I.B., E.I.F., E.I.G., and Status. The table contains several rows of data for wells in Comanche County, Kansas.

Below the table, there are two preview windows. The first preview shows a 'Completion Card - IOG' for well 15-03-0082, listing details like 'Contr. PICKRELL 7047', 'P. EQ508B Comm. 7', and 'Teps'. The second preview shows a 'WELL LOG' for well 15-03-0082, including company information (Barbara Oil Company), test data (Tested From 1880' to 1910', Hydraulic Mud Pressure—Initial (A) 2650#, etc.), and a 'LATEROLOG SURVEY' section with various parameters like 'LATEROLOG 3', 'GAMMA RAY - SENS - 400', and 'LATEROLOG 2 - 16\".

# Table of Contents

---

## Features

Memorial.....	11
---------------	----

## Departments & Columns:

KGS Tech Talks .....	4
President's Letter .....	7
Advertiser's Directory .....	8
From the Manager.....	9
KGS Board Minutes .....	10
Professional Directory .....	19 & 20
Exploration Highlights .....	24 & 25
Kansas Geological Foundation Memorials.....	26

## ON THE COVER:

Diabase dikes intruding Troy Granite.  
This is just one outcrop you will see if you attend the Mid-Centimeter Field Conference this October.  
See more information on page 10.

---

## CALL FOR PAPERS

The Kansas Geological Society Bulletin, which is published bimonthly both in hard-copy and electronic format, seeks short papers dealing with any aspect of Kansas geology, including petroleum geology, studies of producing oil or gas fields, and outcrop or conceptual studies. Maximum printed length of papers is 5 pages as they appear in the Bulletin, including text, references, figures and/or tables, and figure/table captions. Inquiries regarding manuscripts should be sent to Rebecca Radford, [manager@kgslibrary.com](mailto:manager@kgslibrary.com) or mailed to 212 N. Market, Ste. 100, Wichita, KS 67202. Specific guidelines for manuscript submission appear in each issue of the Bulletin, which can also be accessed on-line at the Kansas Geological Society web site at <http://www.kgslibrary.com>



# SOCIETY Technical Meetings

## 2014 Technical Talks - NEW LOCATION!!!

Sept. 2— *“Advancements in Data Acquisition via Well Logs; More Data Equals More Reservoir Knowledge and Better Long Term Production Results”* - Mark Houpe, Recon

Sept. 24— *“Worldwide seismic activity and earthquake activity in Oklahoma”* - Glen Brown, Continental Resources, Inc.

*We are busy scheduling more talks so check the web page for up-to-date information  
<http://www.kgslibrary.com/techtalks.cfm>*

Nov. 19— “TBA” - Pamela Kempton, Kansas State University Geology Dept. Chair

For More Information or suggestions of speakers  
Please contact Dave Clothier: [dave@mccoypetroleum.com](mailto:dave@mccoypetroleum.com)

### **NOTICE!!**

#### **NEW Location for Technical Meetings**

*All KGS technical presentations are held at 12:30 p.m. at the Landmark Square Building, located at 212 N. Market. We have a new meeting room on the 4th floor, up the stairs and at the end of the hallway in the Wisdom Center.*

*Note: For those geologists who need 30 points to renew their licenses, there will be a sign-in sheet at each presentation and also a certificate of attendance.*

Please remember to check the website  
For the most up to date information on Technical Talks

<http://www.kgslibrary.com/techtalks.cfm>





## BOARD OF DIRECTORS

---

### PRESIDENT

Brian Fisher

### PRESIDENT-ELECT

Frank Mize

### SECRETARY

Leah Kasten

### TREASURER

Paul Ramondetta

### DIRECTORS

Dave Clothier

Tim Hellman

Frank Mize

### ADVISORS

Tom Hansen

Larry Richardson

## COMMITTEE CHAIRMEN

---

### Advertising

Kent Scribner

### Advisory

Tom Hansen

Larry Richardson

### Annual Banquet

Bob Bayer

### Budget Committee

Paul Ramondetta

### Bulletin

Rebecca Radford

### Continuing Education

Robert Cowdery

### Distinguished Awards

Dave Clothier

### Environmental

Kent Matson

### Field Trip

Larry Skelton

### Fishing Tournament

Randy Teter

### Future Plans

Chuck Brewer

### Golf

David Barker

### Historian

Larry Skelton

### Investment

Paul Ramondetta

### Library

Roger Martin

Ted Jochems

### Membership

Larry Friend

### Nomenclature

John H. Morrison, III

### Picnic

Wes Hansen

### Public Relations

Robert Cowdery

### Shooting Tournament

Larry Richardson

### Technical Program

Dave Clothier

### Ticket Sales

Bill Shepherd

## A.A.P.G. DELEGATES

---

Ernie Morrison  
2018

Douglas Davis  
2018

## BULLETIN STAFF

---

### EDITOR

Rebecca Radford—Interim (316) 265-8676

### ADVERTISING

Kent Scribner  
Stelbar Oil Corp. (316) 264-8378

### PROFILES/MEMORIALS

Robert D. Cowdery  
Consultant (316) 267-9030

### EXPLORATION HIGHLIGHTS

John H. Morrison, III  
Independent O&G (316) 263-8281

### STATE SURVEY

Rex Buchanan  
KS Geological Survey (785) 864-3965

### SOCIETY NEWS

KGS Library (316) 265-8676

### EDITOR EMERITUS

Wes Hansen (316) 263-7313  
Larry Richardson (316) 262-8427

## K.G.S. LIBRARY

---

PHONE 316-265-8676 FAX 316-265-1013

email: [frontdesk@kgslibrary.com](mailto:frontdesk@kgslibrary.com) or

Web: [www.kgslibrary.com](http://www.kgslibrary.com)

### LIBRARY MANAGER

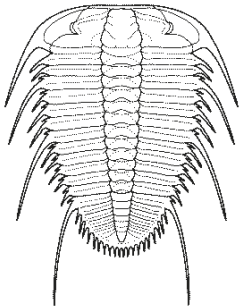
Rebecca Radford 265-8676

[manager@kgslibrary.com](mailto:manager@kgslibrary.com)

The KGS *Bulletin* is published bi-monthly by the Kansas Geological Society, with offices at 212 North Market, Wichita, Kansas 67202 Copyright 2014, The Kansas Geological Society. The purpose of the *Bulletin* is to keep members informed of the activities of the Society and to encourage the exchange and dissemination of technical information related to the Geological profession. Subscription to the *Bulletin* is by membership in the Kansas Geological Society. Limited permission is hereby given by the KGS to photocopy any material appearing in the KGS *BULLETIN* for the non-commercial purpose of scientific or educational advancement. The KGS, a scientific society, neither adopts nor supports positions of advocacy, we provide this and other forums for the presentation of diverse opinions and positions. Opinions presented in these publications do not reflect official positions of the Society.



**Twenty-two Trucks Serving**  
Kansas—Colorado—Texas—Nebraska—Illinois  
**DST's**  
**Back Pressure testing (G1 & G2)**  
**Slick line services using the same Weatherford**  
**Electronic Pressure Gauges used on DST's**



**1-800-728-5369**  
FAX 1-785-625-5620

[www.trilobitetesting.com](http://www.trilobitetesting.com)  
[trilobite@eaglecom.net](mailto:trilobite@eaglecom.net)

**SHOPS LOCATED IN:**  
Hays, KS  
Scott City, KS  
Pratt, KS  
Hugoton, KS  
Oberlin, KS  
Clay City, IL

## ***CAN YOU NAME THE CRITTER?***

Sponsored by Trilobite Testing, Inc.

Is your paleo up to date?

If you know the name of the trilobite,  
submit your guess via e-mail to  
[manager@kgslibrary.com](mailto:manager@kgslibrary.com)

Remember that *Trilobite Testing* is  
sponsoring your efforts, so be sure to thank  
Paul Simpson the next time you see him.

**Bulletin committee members and PhD's in  
Paleontology are prohibited from entering.**



**We've upgraded!!!**

**We now have a 44" Context Scanner**

**AND**

**A 44" Cannon Plotter**



**Bring in your old maps,  
we have scanned several  
and they look great!**

**Our pricing Special:**

**Solid color @ \$4.00/sq. ft.**  
**Line maps w/color @ \$3.00/sq. ft.**



# President's Letter

Dear Members,

Fall is coming soon and the hot weather has arrived in full. We have been fortunate to have some substantial rains in Western Kansas which were much needed but have slowed and delayed down field activities. We had another great picnic again this year and the rains were over before the outdoor activities started. I want to thank our Co-Chairs, Wes and Betty Hansen, our manager and volunteers who put a lot of hard work into the picnic to make it a success again this year. We also want to thank Meghan Curtis for getting us a discount on some of the picnic supplies. We are also lucky to have our World Class Bingo Caller return for us – Mr. Paul Ramondetta and his assistant Mr. Doug Davis - who again did a great job! We seem to have some serious Bingo players in our Society.



Don't forget we have the upcoming KGS Fishing Tournament on September 12<sup>th</sup>. This will be our 30<sup>th</sup> annual tournament. Randy Teeter and Jon Christensen have been busy putting this together for our Society and it will be a special event. Also on October 3<sup>rd</sup> we will be having our annual KGS Sporting Clays Shooting Tournament run by Larry Richardson. This will be our 21<sup>st</sup> event. Our chairman Larry Richardson and his committee are putting the event on with some great prizes again this year. Please thank our chairmen for their hard work and dedication. Please come out to fish and shoot with your fellow KGS members. My score on the sporting clays event is slowly getting better each year and I like to miss a few - just to let my friends think they are better than me!

Dave Clothier and his committee have been busy securing speakers for the fall Technical talks. Please come out and use our new meeting space.

These much needed summer rains that we have been having should help with the speedy recovery of the Lesser Prairie Chicken numbers and Kansas agriculture. In the meantime let's hope nothing else is declared threatened which has the potential to impact our business and the Kansas economy. Hope to see you at the KGS events and Technical talks.

Respectively submitted,  
Brian G. Fisher - President 2014





KANSAS STATE UNIVERSITY

**GEOLOGY**  
DEPARTMENT

**GRADUATE EDUCATION**  
*for active professionals*

Through:                      Leading to:  
Workshops                      Academic credits  
Field Trips                      Certificates (pending)  
Distance Education              M.S. degree

With specializations in:  
Petroleum Geology  
Groundwater  
Exploration Geophysics  
Environmental Geochemistry

Information:  
KSU Continuing Education: [www.dce.ksu.edu](http://www.dce.ksu.edu)  
KSU Geology Department: [www.ksu.edu/geology](http://www.ksu.edu/geology)  
KSU Graduate School: [www.ksu.edu/grad](http://www.ksu.edu/grad)  
or e-mail George Clark, interim dept. head: <[grc@ksu.edu](mailto:grc@ksu.edu)>

**ADVERTISER'S DIRECTORY**

	<i>page</i>
Allied Cementing Company, Inc	23
American Energies Corp. Nitrogen Rejection	13
Breckenridge Exploration Company	15
Duke Drilling	23
GeoCare Services AAPG	17
GeoSteering	14
Global Geophysical Services, Inc.	15
Kansas Geological Foundation	26
Kansas State University	8
Lockhart Geophysical	23
Lone Star Geophysical Surveys	16
MJ Systems	21
MBC Well logging	23
Murfin Drilling Company, Inc	23
Neuralog	15
PARAGON Geophysical Services, Inc	13
Pratt Well Service	15
Professional Directory	19-20
Sterling Seismic Services	13
Sunrise Oilfield Supply	23
Tomcat Drilling	23
Trilobite Testing	6
Walters Digital Library	2
Weatherford	27
Well Enhancement Services	14

Log in to  
Walters Digital Library  
At  
[www.kgslibrary.com](http://www.kgslibrary.com)

Log in as our guest  
and see the Society's Database

A convenient way to see what  
you might want to order!  
Call or email your order to:  
316-265-8676  
[frontdesk@kgslibrary.com](mailto:frontdesk@kgslibrary.com)

**ADVERTISER'S RATES: 2014**

Full Page	B&W	Color
6 issues	\$2,000	\$2,500
3 issues	\$1,080	\$1,325
1 issue	\$480	\$525
<b>1/2 Page</b>		
6 issues	\$1,000	\$1,500
3 issues	\$540	\$825
1 issue	\$225	\$350
<b>1/4 Page</b>		
6 issues	\$600	\$900
3 issues	\$325	\$525
1 issue	\$150	\$250
<b>1/8 Page</b>		
6 issues	\$300	\$500
3 issues	\$175	\$325
1 issue	\$75	\$185
<b>Professional Ad (Business Card)</b>		
6 issues	\$90	\$180

*For one-time ads, call Rebecca at 316-265-8676*

# From The Manager

Dear Members,

Your KGS Library has been under construction most of this past month and it is starting to take shape. We have moved three offices up to the front where we can actually see out windows! Can't tell you how nice that is. When completed, we will have a new front entrance off the street and a small door entrance that you can enter from inside the building. I hear this is much like it was back in the 80's. We have also taken down one row of booths which has given us much needed room to expand the Drill Stem Test cabinets. We should be completed by the end of August, hopefully.

Our next event is the **KGS Fishing tournament which is Friday, Sept. 12th** and will be held at Pratt County Lake. This is the 30th year so let's get 30 people out there to fish! Also coming up in early October is our **KGS Clay Shoot. That will be October 3rd.** Again held out at the beautiful facility at Lynbrooke Sporting Clays near Augusta.

Our Technical Meetings have started up again so be sure to keep checking on-line to see what talks are getting added as the fall progresses. If you have any suggestions please let Dave Clothier know and he and his committee will work at getting speakers lined up for another great year of talks.

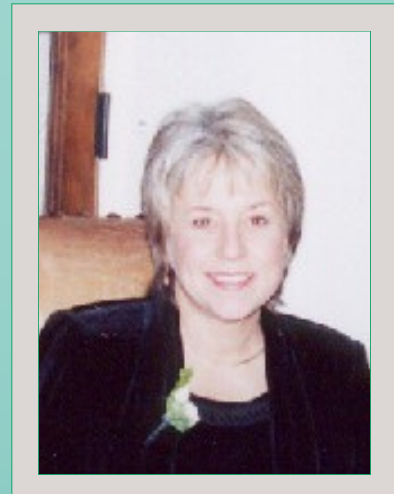
We had a very good turnout for the KGS Picnic in August. Lots of Bingo players and lots of little kids running around having a good time. It is always good to see families at this event, one of the few times we get to see each others kids, grandkids, etc. Thanks to Wes Hansen ( and Betty!) for making this year's picnic happen. And thank you to all of you who supported it with your donations. It's what makes these events successful!

Now that school is back in session, I noticed that we have quite a few WSU geology students who will be graduating in December and are already out there looking for jobs. If your company or you know of a company looking for geo-techs or more permanent positions, please keep these students in mind. They are excited and ready to jump into the job and learn those real life lessons. If nothing else, you might consider mentoring one of these fine students to give them a leg up in the real world.

Respectfully submitted,

*Rebecca Radford*

Manager



**Let Us Print Your Geo Reports  
And Save Your Time For Finding More Oil & Gas  
Top Quality Color Printing For Our Membership**

**Email your files to: [kgsorders@gmail.com](mailto:kgsorders@gmail.com)**



# AAPG Mid-Continent Field Conference

Hosted by the Ardmore Geological Society



The Mid-Continent Field Conference will be exploring the Arbuckle Mountains near Ardmore, Oklahoma. The conference is October 17-19, 2014.

Registration is on-line at: [aapgmcs.org/field-conference/2014](http://aapgmcs.org/field-conference/2014) and filling fast!

Or stop by the KGS library and pick up a hard copy of the registration brochure.





---

# *Memorial - Ray Dombaugh*

---



Raymond R. Dombaugh, 84, passed away Tuesday, August 12, 2014, at his home in Wichita. Born in Anthony, Kansas on December 11, 1929, Ray grew up on the farm. He graduated from Wichita State University with a degree in geology. He was employed with Petroleum Inc. until forming his own company, Pate-Dombaugh Petroleum, and continued working until recent months.

He was most proud of his service to his country in the United States Air Force where he became an officer and pilot with Charlie. He was a former board member of Farmer and Merchants State Bank of Derby and past president of Rolling Hills Country Club. Five holes-in-one reveal his enjoyment of golf and the company of the "Oil Field Trash." He enjoyed traveling with his wife, June, to Branson, MO and Fort Walton Beach, FL. Ray was preceded in death by parents, Vivian and Elsie Dombaugh; brother, Keith Dombaugh, and first wife, Theresa (Babb) Dombaugh. He is survived by wife, June (Burnett) Dombaugh; daughters, Dena Robinson (Craig), Diane Sims (Roger) all of Wichita; grandchildren, Candace Scott, Gavin Dewey (Jaclyn), Blake Robinson (Becca) and Whitney Robinson; step-granddaughters, Molly Schoen (Robert), Mary Randel (Johnny) and Melanie Henning (Matt); 12 great-grandchildren. Memorial service was held on Thursday, August 21, West Evangelical Free Church, 1161 N. Maize Rd. Memorial established with the Salvation Army, 350 N. Market, Wichita, KS 67202. Downing & Lahey Mortuary West.

---

---

*Stop in and see how your library is changing!*



# The Kansas Geological Society Wishes To Thank The Following For Their Support Of The Picnic

Basic Energy Services  
Bittersweet Energy  
Don Beauchamp  
Brito Oil Company, Inc.  
Douglas Davis, Jr.  
Alan DeGood  
Diamond Testing  
Eagle Creek Corporation  
Edminston Oil Company  
Brian & Debra FitzGerald  
Geotechnical Services, Inc.  
Gressel Oilfield Service, Inc.  
Wes & Betty Hansen  
Gerald Honas  
Independent Oil & Gas  
Ted Jochems  
Phil & Chris Knighton  
Lario Oil & Gas Co.  
Lotus Operating Co., LLC  
Roger Martin  
Sal & Chellie Mazzullo  
McCoy Petroleum Corp.

Ernie & Pat Morrison  
Mull Drilling Co., Inc.  
Murfin Drilling Company  
National Oil  
Robert O'Dell  
Palomino Petroleum  
Tim Pierce  
Range Oil Company, Inc.  
Raymond Oil Company, Inc.  
Larry Richardson  
Brad Rine  
Kirk Rundle  
Fred Stump  
Sunrise Oilfield Supply  
Superior Well Services  
Trek AEC, LLC  
Trilobite Testing  
Val Energy  
Vincent Oil Corporation  
Weatherford Logging  
Woolsey Petroleum Corp.







Providing Quality Seismic Since 1993

Visit our website at  
[www.parangogeo.com](http://www.parangogeo.com)



3500 N. Rock Rd., Bldg. 800, Wichita, KS 67226 316-636-5552  
[paragon@parangogeo.com](mailto:paragon@parangogeo.com)

# WANTED



## LOW BTU GAS to Buy or Treat

[www.NitrogenRejectionUnit.com](http://www.NitrogenRejectionUnit.com)



American Energies Corporation  
 316-263-5785

*Experience, Integrity, Innovation...*



SEISMIC SERVICES, LTD.  
[www.sterlingseismic.com](http://www.sterlingseismic.com)

**Renegade Seismic Studio Refraction Statics  
 Z-White Spectral Enhancement  
 Tsunami Pre-Stack Time Migration**

Projects from one square mile "Postage Stamp" 3Ds to the 1,100 square mile nine 3D merge through PSTM we completed in 2006, no project is too small or too big. All projects are given the same attention to detail that we have become known for.

**Structural or stratigraphic, we've got the experience  
 to provide you with a superior dataset.**

**303-347-9011**





## WOULD YOU LIKE TO INCREASE YOUR PRODUCTION AT A FRACTION OF THE COST OF HORIZONTAL DRILLING?



**Well Enhancement Services, LLC** is jetting laterals utilizing new technology and coiled tubing. We now have the ability to place hundreds of gallons of acid hundreds of feet away from the well bore. This allows us to not only enhance existing production but to produce reserves previously unreachable. It has established itself by repeatedly increasing production in both new and existing wells. Contact us for more information, questions or to schedule your next well with **WES**.



### Please Contact Us:

Phone: (785) 625-5155

Fax: (785) 625-4151

Field: (785) 259-4638

wesofhays@hotmail.com  
Box 87, Schoenchen, KS 67667

*“Tap into success.....with WES”*

www.**GeoSteering**.com

281-573-0500  
info@geosteering.com

**Free introductory consultation with modeling: let us demonstrate whether images or propagation resistivity could add value to your well.**

**Personnel with degrees & 20+ years of oilfield experience**

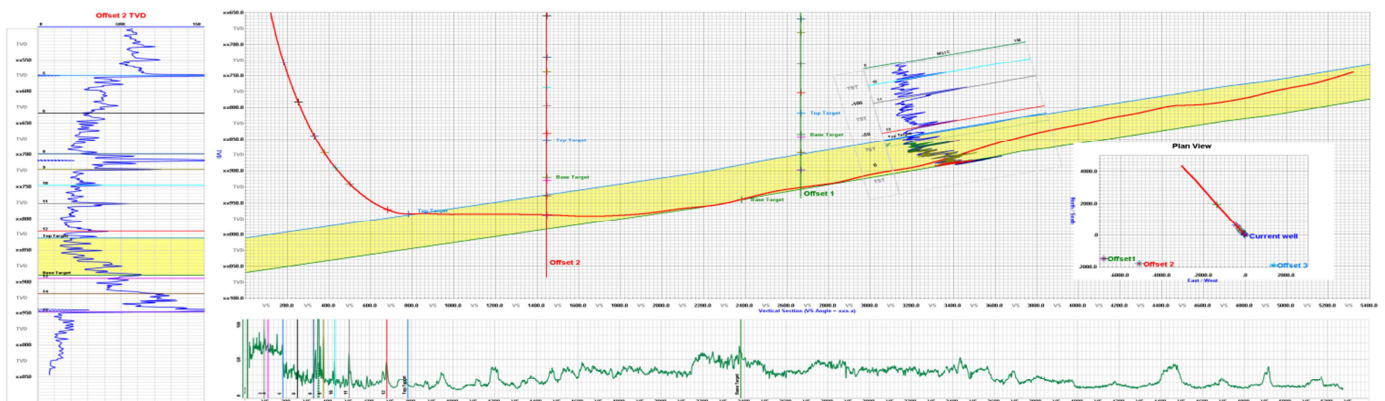
**Proprietary software**

**TST interpretation for GR only jobs**

**Image displays / interpretation for jobs with azimuthal GR, resistivity or density**

**Resistivity modelling / interpretation for jobs with LWD propagation resistivity**

**Real-time (always)**





Call us 24  
Hours-A-Day  
620-672-2531



Complete Well Service

Since 1946

P.O. Box 847  
Pratt, Kansas 67124

Kenneth C. Gates  
President

Kevin C. Gates  
Vice President

1-800-660-7974  
Fax: 620-672-5902

Member KIOGA /AESC

Equipment yard & field office:  
1 3/4 miles North on Highway K-61 from 54 & K-61 Junction

- . Experienced Crews . Rod & Tubing Service . Workover & Completions . Swab Tanks
- . Pole Masts-Single and Double Derricks . Air Foam Unit . Monitor & Water Well Drilling
- . Reverse Circulating Pump & Power Swivel Equipment . Statewide Oilfield Hauling
- . Environmental Cleanup . Vacuum Trucks/Water Trucks . Dirtwork-Dozers, Grader, Backhoe

**Hydrovac Excavation Service**

- . Cleaning cattle guards
- . Mud tank cleaning
- . Potholing . Trenching
- . Pipeline Crossings



www.prattwell.com



**Neuralog**

Turning Paper Into Petroleum

**Bryan Mills**  
Regional Sales Manager

**Solutions for Today's Geoscientists**

- Scan, Print & Digitize - Logs & Maps
- Geological Interpretation
- Master E&P Data Management

1.281.240.2525

bmills@neuralog.com · www.neuralog.com



**SEISMIC ACQUISITION**

Check us out at [www.breckex.com](http://www.breckex.com)

Breckenridge Exploration Co., Inc.  
Highway 180 E  
P.O. Box 789  
Breckenridge, TX 76424  
Bus: (254) 559-7566

Denver Colorado Office  
600 17th Street, Ste. 2800 S  
Denver, Colorado 80202-5428  
Bus: (303) 563-5301  
Mob: (254) 559-0587

Sensible Seismic Acquisition in the Mid-Continent and the Rockies



**UNLEASH AMBIENT!**



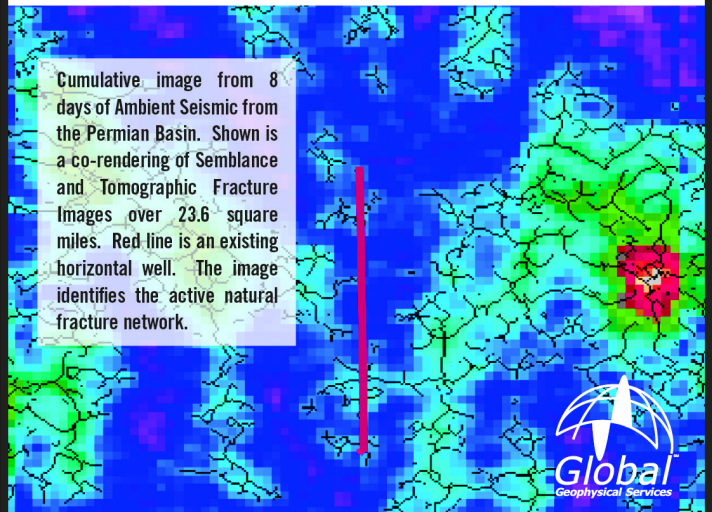
**AGGRESSIVE PASSIVE SEISMIC**

Ambient Seismic captures natural, continuous background seismicity and can be processed to reveal active natural fracture systems and stress regimes. The data can be collected during conventional 3D seismic surveys. Using patented processing techniques developed for microseismic monitoring, we produce highly sensitive images of cumulative seismic activity over extended time periods to identify active fracture areas, volumes and pathways.

Our objective is to help oil and gas companies identify and characterize prospectivity and productivity, reduce risk, optimize well completion techniques and monitor changes in hydrocarbon reservoirs.

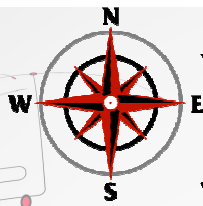
Contact [AMBIENT@globalgeophysical.com](mailto:AMBIENT@globalgeophysical.com)

Download the White Paper at:  
[www.globalgeophysical.com/Ambient](http://www.globalgeophysical.com/Ambient)



Global Geophysical Services, Inc.  
tel +1 713-972-9200 [www.globalgeophysical.com](http://www.globalgeophysical.com)

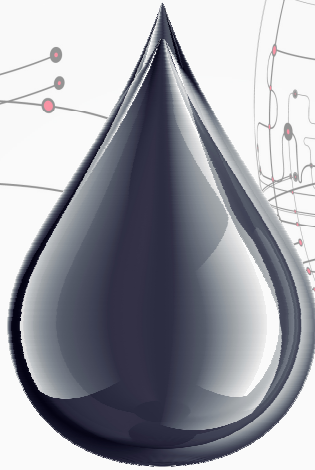




# LSGS

**LoneStar Geophysical Surveys**

It's Real Simple. It's Real Effective.



Locating every last drop.



**Superior Seismic Acquisition System**



**Data Recording 2D, 3D, 4D & VSP**



**AHV-IV™ Commander 364**



**Permitting Services**



**HSE Management System**



**Front-End Services**



**Shot Hole Drilling**



**Brush Clearing**



**Chainsaw Crews**



**Heliportable**

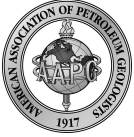


Submit a bid request online:

**[www.lstargeo.com](http://www.lstargeo.com)**

441 So. Fretz Avenue Edmond, Oklahoma 73003 (O) 405.726.8626 (F) 405.285.8521  
lsgs1@lstargeo.com





Security for AAPG Members  
& Their Families  
Through Group Insurance

*Life*  
*Health*  
*Dental*  
*Disability*  
*Auto and Homeowner*  
*Supplemental Plans*

AAPG's  
GeoCare Benefits Insurance Program  
P. O. Box 9159  
Phoenix, AZ 85068-9159  
800-337-3140  
E-mail: [geocarebenefits@agia.com](mailto:geocarebenefits@agia.com)  
[www.geocarebenefits.com](http://www.geocarebenefits.com)

*Coming Soon*

KGS  
Clay Shoot  
Friday, Oct. 3rd



Registration Form on-line  
[www.kgslibrary.com](http://www.kgslibrary.com)

*The KGS Library is pleased to  
announce a new service*



Creating  
LAS files  
from our logs  
or yours

**\$20.00 per  
curve!!**

Quick  
turn-around

Send us your log file  
or tell us which of  
ours you would like  
converted.

316-256-8676

The Kansas Geological Society maintains its ownership and  
copyright when converting library log files to LAS



Some of the crowd in attendance at the KGS Picnic.....playing Bingo.

**NOTICE!!!!**

*Tech Talks in New Location  
We have moved our technical  
meetings to the same building the  
Library is in: 212 N. Market  
4th floor  
In the Wisdom Center*



**Kansas Geological Foundation  
Video / DVD Collection**

The KGF has an extensive collection of videos available for check-out at no charge. Only pay for shipping back.

These are ideal for classroom or general public viewing.

See the web for titles & descriptions  
[www.kgfoundation.org](http://www.kgfoundation.org)

Call 316-265-8676  
Ask for Janice to check out videos



# PROFESSIONAL DIRECTORY

**Kirk Rundle**  
**Consulting Geophysicist**

3D Seismic Design, Acquisition to Processing QC,  
 Interpretation and Analysis, Subsurface Integration  
 7340 W. 21st. N., Ste. 100  
 Wichita, Kansas 67205

Office: 316-721-1421 Fax: 316-721-1843  
 Email: [kirk@rundlegeo.com](mailto:kirk@rundlegeo.com)

**Blue Ribbon Drilling, LLC**

PO Box 279, Dewey, OK 74029

Phone and Fax: 918-534-2322  
 John's Cell Phone: 918-440-9639  
 Larry's Cell Phone: 918-440-9638  
 Jeff's Cell Phone: 918-440-9647

Email: [johnroutree@bratco-operating.com](mailto:johnroutree@bratco-operating.com)



*Banks Resources*

**Scott Banks**  
 Petroleum Geologist  
[banksbs@aol.com](mailto:banksbs@aol.com)  
 Cell: 316.253.8550

1700 N. Waterfront Pkwy.  
 Bldg. 300 • Suite C  
 Wichita, KS 67206

Phone: 316.558.5262  
 Fax: 316.558.5263

**WESLEY D. HANSEN**

**Consulting Geologist**

Well site Supervision • Geologic Studies  
 212 N. Market, Ste 257  
 Wichita, Kansas 67202  
 Off: (316) 263-7313  
 Mobile: (316) 772-6188  
[whansen4651@sbcglobal.net](mailto:whansen4651@sbcglobal.net)



**KEVIN L. KESSLER**

INDEPENDENT/CONSULTING PETROLEUM GEOLOGIST

WELLSITE SUPERVISION • GEOLOGIC RESEARCH  
 OIL & GAS PROSPECTS  
 KANSAS & EASTERN COLORADO

MAILING ADDRESS	PHONE
1199 N. PONDEROSA RD.	RES.: (316) 522-7338
BELLE PLAINE, KS 67013	MOBILE: (316) 706-6636
EMAIL: <a href="mailto:KKESSLER1199@AOL.COM">KKESSLER1199@AOL.COM</a>	

**KGJ ENTERPRISES**

Contract Oil & Gas Accounting &  
 Office Management

Kathryn G. James, MBA 4278 SW 100th ST. Augusta, KS 67010	(316) 775-0954 (316) 250-5989 <a href="mailto:kgjames@onemain.com">kgjames@onemain.com</a>
---	--

**ROGER L. MARTIN**  
 Independent Petroleum Geologist

200 E 1st St, Ste 405, Wichita, KS 67202

Office 316-833-2722 Cell: 316-250-6970  
 KS Field Cell: 316-655-1227  
 Fax: 316-425-3829  
 Email: [rogermartingeo@yahoo.com](mailto:rogermartingeo@yahoo.com)

**ALFRED JAMES III**

**Petroleum Geologist**  
 Kansas - Colorado - Utah

200 W. Douglas, Ste. 525, Wichita, Kansas 67202

SIPES # 1111  
 Office (316) 267-7592  
[alfred.james55@yahoo.com](mailto:alfred.james55@yahoo.com)

**M. Bradford Rine**

Honorary Life Member—Kansas Geological Society

Licensed Geologist—KS, #204  
 Registered Professional Geologist—Wyo, # 189  
 Certified Geologist—A.A.P.G. # 2647  
 S.I.P.E.S. # 1584 S.P.E. #109833-4

PROSPECT EVALUATION • PROSPECT GENERATION  
 WELLSITE SUPERVISION • EXPERT TESTIMONY • OPERATIONS  
 PROPERTY EVALUATION • RESERVOIR STUDIES  
 DRLG./COMP. CONSULTATION

Suite 415 100 S. Main Wichita, KS 67202	Office: (316) 262-5418 Fax: (316) 264-1328 Cell: (316) 250-5941
---	---



RESOURCE  
 MANAGEMENT  
 GROUP, INC.

Paul Gunzelman  
 President/Geologist

Wichita, Kansas 316.634.6026  
 email [p.gun@sbcglobal.net](mailto:p.gun@sbcglobal.net)

**MELLAND ENGINEERING, INC.**

Petroleum Engineering & Geological Consulting

**James E. Melland, P.E., P.G.**  
 President

Office: (620) 241-4621 Fax: (620) 241-2621

[jamesm@mellandengineering.com](mailto:jamesm@mellandengineering.com)  
[www.mellandengineering.com](http://www.mellandengineering.com)

P.O. Box 841, McPherson, KS 67460



**Steve Van Buskirk**  
**Petroleum Geologist**

**Van Buskirk Geo-Consulting**

15171 Ridgfield Ln  
 Colorado Springs, CO 80921  
 and  
 514 Rumsey  
 Kiowa, KS 67070

Home: 719-487-8297  
 Cell: 719-393-2900  
[Nexleveline@msn.com](mailto:Nexleveline@msn.com)

Available for Well site work





**Geotech & Design Services**

7171 Highway 6 North, #202  
Houston, Texas 77095

Data digitizing, drafting & computer graphics



Tel: (281) 858-7100

Fax: (281) 500-8534

[heather.wilson@geotechmap.net](mailto:heather.wilson@geotechmap.net)

**Heather Wilson**  
Account Manager

[www.geotechmap.net](http://www.geotechmap.net)

**Some Laser Tag Fun  
At KGS Picnic!**



**We Invite You  
To join**

***Kansas  
Geological  
Foundation***

*\$50.00 membership is  
tax deductible*

*Call 316-265-8676*

*Or send checks to:  
Kansas Geological Foundation  
212 N. Market, Ste. 100  
Wichita, KS 67202*

**The Following Are For Sale**

*Kansas Completion Cards:  
Several sets (call for more information)*

*Oklahoma Completion Cards:  
2 sets—entire state*

*Nebraska Completion Cards—West ranges*

*New Mexico Completion Cards*

*North Dakota Completion Cards*

*Utah Completion Cards*

*Microfiche Electric Logs  
Kansas  
Oklahoma  
Texas*

**Geological Office Furniture:**

- 8-drawer completion card cabinets—21 available
- 7-drawer cabinets—10 available
- Map cabinets—metal—2 available
- Map racks—different sizes—6 available

**Call: 316-265-8676  
Ask for Ted**

Coming Soon

## KGS Fishing Tournament

Friday, September 12th

Pratt County Fishing Lake

Registration flyer in this issue  
(On-Line: Go to Events Tab)

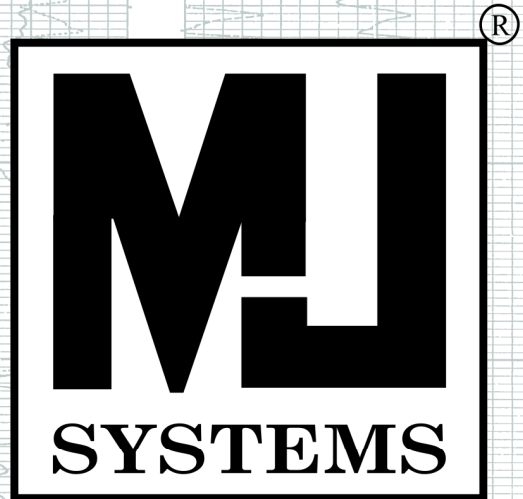


## NOMENCLATURE

The Society Nomenclature committee has changed the way we produce the new field information.

We are now able to email out the updates of fields for a nominal cost to the subscriber. The old cost was \$250.00 per year to receive the 4x6 cards. We now have moved to an excel spreadsheet of fields which is much easier to update and can be emailed out to subscribers. The cost is now \$100.00 per year for a subscription.

If interested, please call Rebecca at the  
KGS Library.  
316-265-8676



*Logs Since 1971*

[www.mjlogs.com](http://www.mjlogs.com)

**6 MILLION LOGS**

**DEPTH REGISTERED**

**INTERNET  
DOWNLOADS**

**ONLINE  
SEARCH**

**SEARCH AND FILTER BY DEPTH**

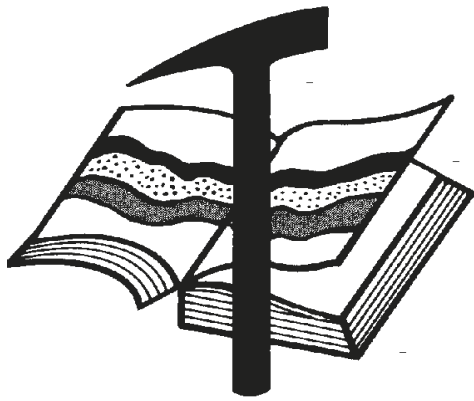
**OWN THE LOGS**

**LogSleuth Software**

**CLUB WEB**

**WEB SITE CATALOGUE**

**1-800-310-6451**



# Kansas Geological Foundation

Web Site: [www.kgfoundation.org](http://www.kgfoundation.org)

**212 North Market  
Wichita, Kansas 67202**

A not-for-profit educational and scientific corporation

## **GOALS:**

- promote geology and earth science
- preserve geological records
- establish memorials and endowments
- support field trips and seminars
- financial aid and grants to students

**PLEASE HELP SUPPORT THE FOUNDATION**

## **Kansas Geological Foundation Services**

The Kansas Geological Foundation provides the following services as a part of the organization's commitment to educate the public regarding earth science.

### **Speaker's Bureau**

A list of speakers available to talk about various aspects of geology may be obtained by contacting Janice Bright at the KGS Library, 265-8676. This service is free to the public.

### **DVD/Videotape Library**

The KGF maintains a DVD & videotape library focused primarily on the various fields of earth science. These tapes may be checked out without charge by the public. To obtain a list of tapes, please contact the KGS Library, 212 N. Market, Ste. 100, Wichita, KS 67202, or call Janice Bright at 265-8676.

The Kansas Geological Foundation was founded in March, 1989 as a not-for-profit corporation under the guidelines of section 501(c)(3) of the tax code to provide individuals and corporations the opportunity to further the science of geology. It is dedicated to providing charitable, scientific, literary and educational opportunities in the field of geology for the professional geologist as well as the general public.

KGF can receive in-kind donations through which the donor may receive a tax deduction. Of equal importance, the KGF provides the financial resources to sort, process and file this data at the KGS library. If you have a donation to make, please contact the KGF at 265-8676.

Your tax-deductible membership donation helps to defray the cost of processing donations and to support public education programs about the science of geology. Annual membership begins at \$50.00 per year. Donations of \$100.00 or more are encouraged through the following clubs:

<b>Century Club</b>	\$ 100 to \$ 499
<b>\$500 Club</b>	\$ 500 to \$ 999
<b>Millennium Club</b>	\$1000 to \$5000
<b>President's Club</b>	\$5000 and over



WESTERN KANSAS  
SOUTHERN NEBRASKA



EASTERN COLORADO  
OKLAHOMA & TEXAS PANHANDLES

**10 Drilling Rigs**

**10 Well Service Rigs & Roustabout Services**

For contract information, please contact:  
Blaine Miller / Drilling Department  
316-858-8607 (Direct) or 316-267-3241

For contract information, please contact:  
Alan Hays, Well Service Sprvsr.  
785-421-2103 or 785-567-8739 (cell)

250 N. Water #300—Wichita, KS 67202

East Highway 24—Hill City, KS 67642



**DUKE DRILLING COMPANY**

**ROTARY DRILLING CONTRACTOR**

620 Hubbard PO Box 823  
Great Bend, KS 67530  
Phone 620-793-8366

100 S. Main, Ste. 410,  
Wichita, KS 67202  
Phone 316-267-1331  
Fax 316-267-5180



**TIMOTHY J. SANDERS**  
tsanders@tomcatdrilling.com  
CELL (316) 259-1652

[WWW.TOMCATDRILLING.COM](http://WWW.TOMCATDRILLING.COM)

**TOMCAT DRILLING LLC**

<b>CORPORATE OFFICE</b> 8301 E. 21ST NORTH, SUITE 360 WICHITA, KANSAS 67206 PHONE (316) 262-8554 FAX (316) 267-0749	<b>FIELD OFFICE AND YARD</b> 225 NW HIGHWAY 270 WOODWARD, OKLAHOMA 73801 PHONE (580) 254-3026 FAX (580) 254-3028
---	--



5 ROTARY RIGS SERVING  
OKLAHOMA, KANSAS AND  
THE TEXAS PANHANDLE

Great Bend (620) 793-5861      Ness City (785) 798-3843      Medicine Lodge (620) 886-5926



Acidizing Available at Medicine Lodge District

Russell (785) 483-2627      Oakley (785) 672-3452



**2D & 3D Vibroseis Acquisition**  
**ARAM\*AIRES Seismic Recording System**

1600 Broadway, Suite 1660 • Denver, CO 80202-4915  
(303) 592-5220 • info@lockhartgeo.com  
for complete information go to: [www.lockhartgeo.com](http://www.lockhartgeo.com)

**MBC**

**WELL LOGGING & LEASING**  
**UNMANNED GAS DETECTORS**  
**MUD LOGGING**  
**CERTIFIED INSTRUMENT TECH**

**AUSTIN GARNER**      **MARLA GARNER**

24-HOUR PHONE (620) 873-2953  
MEADE, KANSAS



**FULL LINE SUPPLY STORE**  
With Pump Shop, New & Used Pipe,  
Equipment and Fittings  
Exclusive S-55 casing source

**STORES:**

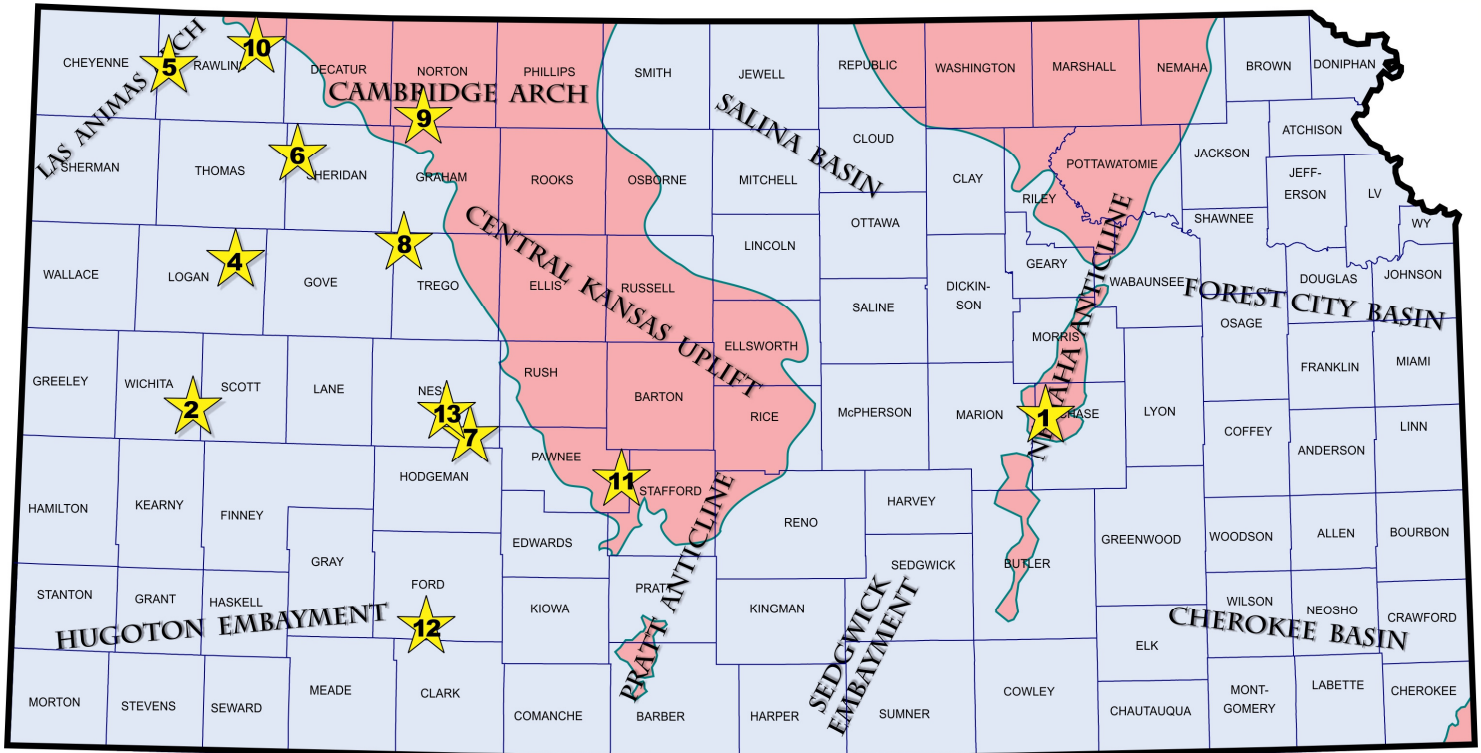
Chanute, KS 620-431-6500	Ness City, KS 800-589-5733
El Dorado, KS 316-321-9323	Osawatomie, KS 913-755-2297
Garden City, KS 877-976-1700	Spivey, KS 620-532-5261
Hays, KS 785-650-0199	McCook, NE 308-345-1542
Hugoton, KS 620-428-6604	

**SALES OFFICES:**

Wichita, KS 800-777-7672	Denver, CO 303-349-8417
Williston, ND 701-570-9255	

# Exploration Highlights

By John H. Morrison, III  
Independent Oil & Gas



**1- Range Oil Company, Inc.,** Wichita (KS), has discovered Viola oil deposits at a wildcat site in **Chase** County, near the Marion County border. The 1 Madden Unit (API 15-017-20916) is producing an unknown amount of crude at location drilled in the NW SE NW of section 31 - T19s- R6E, about nine miles west of Elmdale townsite. The new Panther Ranch Southwest pool lies nearly one and one-quarter miles southwest of closest established production in the Panther Ranch field - a field Range Oil discovered in July, 2007 that also produced oil from the Viola formation from a depth of 2155 to 2165 ft before abandonment. Range Oil has scheduled a 660-ft north confirmation offset, #2 Madden Unit, to be drilled later this month.

**2- Lario Oil & Gas Company,** Wichita (KS), is producing an unknown amount of oil from the Marmaton (Pawnee) formation at the 1-3 Christy Farms (API 15-203-20254) in southeastern **Wichita** County. Duke Drilling tools drilled the well to a total depth of 5230 ft at site located in the SW NW NW of section 3- T19s- R35W. The new discovery lies about one mile north of Lansing - Kansas City and Marmaton oil wells that makeup the Sampson field. Lario opened the Sampson field in late 2012 and the field has given up nearly 57,000 barrels of oil from two wells. Field area is located about four miles southeast of the town of Marienthal, Kansas. Lario's new oil field has been named Sampson North.

**Murfin Drilling Company, Inc.,** Wichita (KS), reports three new oil discoveries in three counties - **Logan, Rawlins** and **Sheridan**, in northwest Kansas. All three new discoveries are producing from multiple pay zones in the upper and middle Pennsylvanian-aged rock group. They include:

**4-Logan County** - The 1-34 Heier - Racette (API 15-109-21257) is producing oil from the Lansing-Kansas City (LKC) and Cherokee (Johnson Zone) formations at site located in the S/2 NE SE of section 34- T12s- R33W. The well was drilled to a total depth of 4800 ft into the Mississippian. The new reserves were found nearly one and one-quarter miles southeast of existing production in the Owen Southeast field (est. 1983, Toronto, LKC oil), or three miles south and eleven miles east of Russell Springs, Kansas. The field has been named H-R.

**5- Rawlins County** - The 1-1 Loker Trust (API 15-153-20992) has been completed as producing oil from the LKC, Marmaton (Pawnee) and Cherokee limestones. The wildcat well establishes the Loker field at site located in the E/2 SW of section 1- T3s- 36W, or two miles north and three miles east of McDonald, Kansas. Company rotary tools bottomed the well at a total depth of 4890 ft. Closest producing oil field in the area of the new find lies one and one-quarter miles to the southwest in the Beeson Northwest field (est. 2012, LKC oil).

**6- Sheridan County** - The 1-14 Stevenson (API 15-179-21353) has found oil deposits about seven miles southwest of the city of Selden, Kansas. The new Geereds Northwest pool opener was drilled to a total depth of 4585 ft in the SW NE SE of section 14- T7s- R30W- The well is producing crude from the Shawnee (Leavenworth, Toronto), LKC (A zone) and the Marmaton (Pawnee) formations. Well site lies on separated feature northwest of abandoned LKC oil production in the Geerdes field (est. 1968, abd. 1975). The field produced over around 16,000 barrels of oil before it was plugged out.

**7- Mai Oil Operations, Inc.**, Dallas (TX), has a new Mississippian oil discovery in **Ness** County with the completion of the 1 Alex Dechant (API 15-135-25756), spotted in the SW SE NE of section 17- T20s- R22W. The 4420-ft deep well found the new oil deposits over one mile northeast of abandoned Mississippian oil production in the Riverside Southeast field (est. 1968, abd. 1988), which gave up nearly 44,000 barrels of oil before production ceased. Mai's new Riverside East field is located about eight miles south and four miles west of Bazine, Kansas.

**8- Ritchie Exploration, Inc.**, Wichita (KS), is producing oil at an undisclosed rate at the 1-22 Walt Living Trust (API 15-195-22939), located in the SE NE NE of section 22- T11s- R25W in **Trego** County. Operator discovered the new reserves in the Lansing - Kansas City formations on a separated feature over one-half mile south of the now abandoned Razak (estbl. Feb. 1981, LKC oil). Discovery Drilling rig was hired to drill the well to a total depth of 4500 ft. The new unnamed field lies three miles north and one and one-half miles east of Collyer, Kansas.

**9-Samuel Gary Jr and Associates, Inc.**, Denver (CO), has produced nearly 1,368 barrels of oil during the first month of production at their 1-1 Neurnberger (API 15-137-20691) in **Norton** County. The wildcat well was drilled by WW Drilling tools to a total depth of 3940 ft. Drill site is located in the SE NW SE of section 1- T5s- R24W, about two miles northeast of the town of Lenora, north central Kansas. Arbuckle formation was the focus of exploration, however, exact pay zone is unknown.

**10- Forestar Petroleum Corporation**, Denver (CO), has a new oil discovery in **Rawlins** County with the successful completion of the 1-13 Rippe (API 15-153-21023). Spotted in the SW SE SE of section 13- T2s- R32W, the wildcat well is producing oil from the Lansing - Kansas City formations nearly one mile northeast of known production in the Erick field (estbl. 1940, LKC oil). Excell Services drilling tools were used to bottom the well at a total depth of 4050 ft. Discovery site is located one mile north and five miles east of Ludell, Kansas.

**11- Charter Energy, Inc.**, Great Bend (KS), has a new field discovery with Viola oil production at the 1 Shuart (API 15-145-21764) in eastern **Pawnee** County. The new find is located in the NE NE NW of section 1- T22s- R15W, about eight and one-half miles east of Larned, Kansas. Closest established production nearby lies nearly three-quarters mile to the northeast in the Jessie field (estbl. May 1958, LKC oil). Closest know Viola production can be found about one and one-quarter miles to the west of the Shuart lease in the Hurray multipay field (estbl. Jan. 1973). Operator drilled the wildcat well to a total depth of 3950 ft. The new field has not been named.

**12-Vincent Oil Corporation**, Wichita (KS), explored nearly one and one-half miles east of established gas production in the Minneola Northeast field (estbl. Dec. 2013) and discovered new gas reserves at the 1-15 Hornback (API 15-057-20930) in **Ford** County. The well is flowing an unknown amount of natural gas from the Mississippian formation at site located in the SW NE NW of section 15- T29s- R24W. Rotary total depth was stopped at 5360 ft. The new unnamed field lies almost fourteen miles south of Fort Dodge, Kansas.

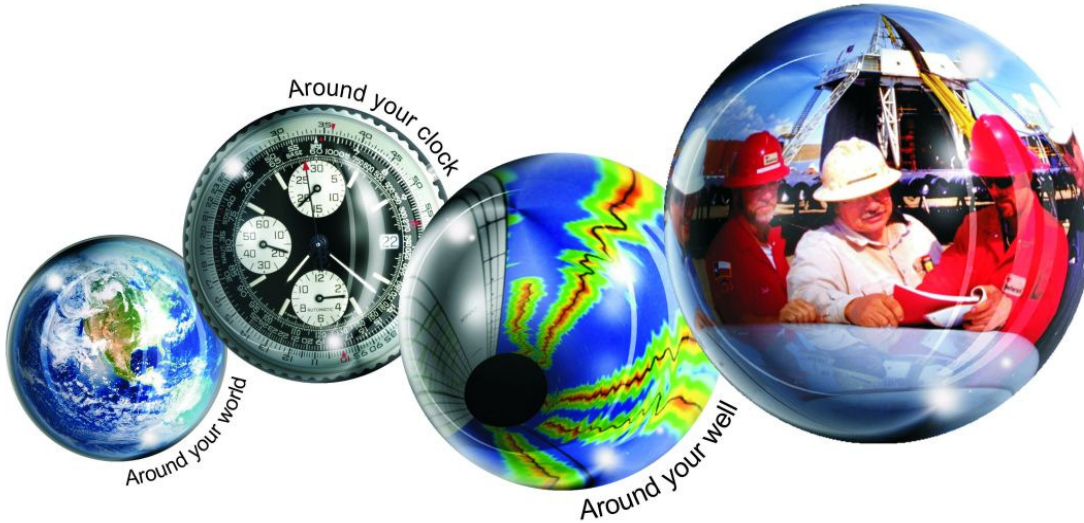
**13- Oil Producers Inc of Kansas**, Wichita (KS), has successfully washed-down the 1 Miner Unit, SW SE NE in section 20- T19s- R23W, in **Ness** County. The wildcat well was originally drilled and plugged by an independent operator in October, 2004. Total depth was reached at 4437 ft. Shows were noted at the time in the Marmaton (Fort Scott 4252 to 4258 ft), as well as in the Mississippian dolomite section. Oil Producers Inc. cleaned the hole out and is producing oil from the Marmaton (Fort Scott) at an undisclosed rate. Wellsite is located almost two miles northeast of the multipay Franklin field (estbl. July 1959) and is about four miles south of Ness City, Kansas. The new oil field has not been named.





# Kansas Geological Foundation Memorials

KGS Member	Date Deceased	Memorial Est.	KGS Member	Date Deceased	Memorial Est.
Dan Bowles	09/89	1990	Edward B. Donnelly	08/01	2001
John Brewer	10/89	1990	Richard P. Nixon	02/02	2002
George Bruce	08/89	1990	Robert W. Frensley	12/01	2002
Robert Gebhart	01/90	1990	Gerald W. Zorger	01/02	2002
Ray Anderson, Jr.	11/90	1990	Don L. Calvin	03/02	2002
Harold McNeil	03/91	1991	Claud Sheats	02/02	2002
Millard W. Smith	08/91	1991	Merle Britting	2002	2002
Clinton Engstrand	09/91	1991	Harold Trapp	11/02	2002
M.F. "Ted" Bear	10/91	1991	Donald M. Brown	11/02	2003
James & Kathryn Gould	11/91	1991	Elwyn Nagel	03/03	2003
E. Gail Carpenter	06/91	1993	Robert Noll	09/03	2003
Benton Brooks	09/92	1992	Benny Singleton	09/03	2003
Robert C. Armstrong	01/93	1993	Jay Dirks	2003	2003
Nancy Lorenz	02/93	1993	J. Mark Richardson	02/04	2004
Norman R. Stewart	07/93	1993	John "Jack" Barwick	02/01	2004
Robert W. Watchous	12/93	1993	Richard Roby	03/04	2004
J. George Klein	07/94	1994	Ruth Bell Steinberg	2004	2004
Harold C.J. Terhune	01/95	1995	Gordon Keen	03/04	2004
Carl Todd	01/95	1995	Lloyd Tarrant	05/04	2004
Don R. Pate	03/95	1995	Robert J. "Rob" Dietterich	08/96	2004
R. James Gear	05/95	1995	Mervyn Mace	12/04	2004
Vernon Hess	06/95	1995	Donald Hoy Smith	04/05	2005
E. K. Edmiston	06/95	1995	Richard M. Foley	06/05	2005
Jack Rine	07/95	1995	Wayne Brinegar	06/05	2005
Lee Cornell	08/95	1995	Charles B. Moore	09/96	2005
John Graves	10/95	1995	Jack Heathman	05/06	2006
Wilson Rains	10/95	1995	Charles Kaiser	09/06	2006
Heber Beardmore, Jr.	09/96	1996	Rod Sweetman	08/06	2006
Elmer "Lucky" Opfer	12/96	1996	Karl Becker	10/06	2006
Raymond M. Goodin	01/97	1997	Frank Hamlin	10/06	2006
Donald F. Moore	10/92	1997	Marvin Douglas	12/06	2006
Gerald J. Kathol	03/97	1997	Robert W. Hammond	04/07	2007
James D. Davies	08/88	1997	Eldon Frazey	04/07	2007
R. Kenneth Smith	04/97	1997	Pete Amstutz	05/07	2007
Robert L. Dilts	05/97	1997	Charles Spradlin	05/07	2007
Delmer L. Powers	06/72	1997	Donald R. "Bob" Douglass	09/07	2007
Gene Falkowski	11/97	1997	Vincent Hiesch	11/07	2007
Arthur (Bill) Jacques	01/98	1998	Glen C. Thrasher	03/08	2008
Bus Woods	01/98	1998	Peg Walters	06/08	2008
Frank M. Brooks	03/98	1998	Theodore "Ted" Sandberg	07/08	2008
Robert F. Walters	04/98	1998	James Ralstin	11/08	2008
Stephen Powell	04/98	1998	Earl Brandt	04/09	2009
Deane Jirrels	05/98	1998	Walter DeLozier	05/09	2009
William G. Iversen	07/98	1998	Don D. Strong	01/10	2010
Ann E. Watchous	08/98	1998	John Stone	02/10	2010
W.R. "Bill" Murfin	09/98	1998	Craig Caulk	03/10	2010
Donald L. Hellar	11/98	1998	Joseph E. Moreland, Jr.	03/10	2010
Joseph E. Rakaskas	01/99	1999	Gene Garmon	03/10	2010
Charles W. Steincamp	02/99	1999	James F. Dilts	05/10	2010
Robert and Betty Glover	10/96	1998	Jerry Pike	05/10	2010
Howard E. Schwerdtfeger	11/98	1999	Donald Hollar	06/10	2010
W. W. "Brick" Wakefield	03/99	1999	Delbert Costa	08/10	2010
V. Richard Hoover	01/00	2000	John Tanner	08/10	2010
Warren E. Tomlinson	01/00	2000	William (Bill) Owen	09/10	2010
James A. Morris	01/00	2000	Harold (Hal) Brown	10/10	2010
Eric H. Jager	03/00	2000	Edmund G. Lorenz	11/10	2010
Kenneth W. Johnson	03/00	2000	Thomas E. Black	05/11	2011
Dean C. Schaake	03/00	2000	Wayne E. Walcher	07/11	2011
Fred S. Lillibridge	05/00	2000	Henry F. Filson	07/11	2011
Jerry A. Langrehr	07/00	2000	Thomas Ray	07/11	2011
Clark A. Roach	07/00	2000	Edgar E. Smith	09/11	2012
Floyd W. "Bud" Mallonee	10/00	2000	Marilyn Messinger	06/13	2013
Ralph W. Ruuwe	09/00	2000	Micheal Mitchell	9/13	2013
Robert L. Slamal	02/01	2001	Orvie Howell	11/13	2013
Jerold E. Jespersion	06/01	2001	James Thompson	11/13	2013
William A. Sladek	06/01	2001	Dick Rowland	09/13	2014
Harlan B. Dixon	06/01	2001			



## All Around You

**Weatherford has always been driven by your needs.**

Now, with the addition of Precision Energy Services we're continuing to build a world of skills, services and technologies that revolve – and evolve – around you.

### **The result?**

An expanded global network of 25,000 people, 730 service bases and 87 manufacturing facilities in 100 countries.

This increased local knowledge and service is there to support you anywhere, anytime. From midday in the Middle East to midnight in the middle of nowhere.

And with greatly strengthened capabilities in the critical evaluation skills of directional drilling and wireline logging, we can do even more to improve the profitability and productivity of your wells.

To see how our sphere of services can work for you, visit [www.weatherford.com](http://www.weatherford.com) or contact either your Weatherford or former Precision Energy Services representative.

Drilling | Evaluation | Completion | Production | Intervention

© 2006 Weatherford International Ltd. All rights reserved. Incorporates proprietary and patented Weatherford technology.

**CHANGE SERVICE REQUESTED**

KGS BULLETIN  
 Sept—Oct 2014

**September 2014**

Sun	Mon	Tue	Wed	Thu	Fri	Sat
	<b>1</b> Labor Day Library Closed	<b>2</b> Tech Talk	<b>3</b>	<b>4</b>	<b>5</b>	<b>6</b>
<b>7</b>	<b>8</b>	<b>9</b> KGS Board Meeting	<b>10</b> KGF Board Meeting	<b>11</b>	<b>12</b> KGS Fishing Tourn.	<b>13</b>
<b>14</b>	<b>15</b>	<b>16</b>	<b>17</b>	<b>18</b>	<b>19</b>	<b>20</b>
<b>21</b>	<b>22</b>	<b>23</b>	<b>24</b> Tech Talk	<b>25</b>	<b>26</b>	<b>27</b>
<b>28</b>	<b>29</b>	<b>30</b>				

**October 2014**

Sun	Mon	Tue	Wed	Thu	Fri	Sat
			<b>1</b>	<b>2</b>	<b>3</b> KGS Sporting Clays	<b>4</b>
<b>5</b>	<b>6</b>	<b>7</b>	<b>8</b>	<b>9</b>	<b>10</b>	<b>11</b>
<b>12</b>	<b>13</b>	<b>14</b>	<b>15</b>	<b>16</b>	<b>17</b>	<b>18</b>
<b>19</b>	<b>20</b>	<b>21</b>	<b>22</b>	<b>23</b>	<b>24</b>	<b>25</b>
<b>26</b>	<b>27</b>	<b>28</b>	<b>29</b>	<b>30</b>	<b>31</b>	